

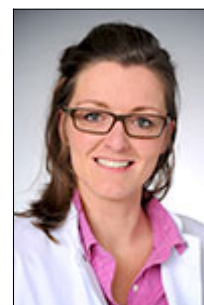


UNIKLINIK  
KÖLN

Tamina Seeger-Nukpezah, MD

## Tamina Seeger-Nukpezah, MD

 Deutsche Version



### Contact

Translational Cancer Research Group  
Klinik I für Innere Medizin (Department of Internal Medicine I)  
Uniklinik Köln (University Hospital of Cologne)  
Building 15, Room 015  
Kerpener Str. 62  
50937 Koeln (Cologne)  
Germany

phone +49 221 478-86741

fax +49 221 478-1429348

e-mail: [\[Email protection active, please enable JavaScript.\]](#)

### Biosketch

Dr. Tamina Seeger-Nukpezah studied medicine at the Universities of Marburg, Freiburg and - within the EU Erasmus program - at the University of Kuopio/Finland from 2002-2009. At the University of Freiburg, Dr. Seeger-Nukpezah received her medical degree and performed her thesis work in the laboratory of Prof. Thomas Benzing in the department of internal medicine, headed by Prof. Gerd Walz. In her thesis work she focused on cell cycle regulation, DNA damage response and the biology of the primary cilium.

Subsequently, to further extend her scientific experience Dr. Seeger-Nukpezah joined the laboratory of Prof. Erica Golemis at Fox Chase Cancer Center, Philadelphia in 2011 and received a research fellowship from the German Research Foundation (DFG). This allowed her to lead a project to uncover novel therapeutic approaches in proliferative disorders of the kidney, such as polycystic kidney disease and renal cell carcinoma.

In 2013, Dr. Seeger-Nukpezah returned to Germany to work as a physician scientist at the medical

department of hematology and oncology of the University Hospital of Cologne, where she established her research group. She is a group leader of the Junior Consortium MILES (Multidisciplinary identification of lineage-specific signaling dependencies in cancer, which is funded by the German Federal Ministry for Education and Research (BMBF) within the e:Med call (e:Med), a contribution to the establishment of systems medicine. The consortium consists of five sub-project leaders of the University of Cologne, linking life sciences with information sciences to identify lineage-specific signaling dependencies in cancer.

In addition, Dr. Tamina Seeger-Nukpezah is a member of the Mildred-Scheel-Lectureship committee. This lectureship has been initiated by the German Cancer Aid (Deutsche Krebshilfe) and the German Cancer Research Center (DKFZ). It is intended to honor the merits of Mildred Scheel and to give recognition to outstanding female scientists who have made meritorious contributions to the field of cancer research.

## **Publications**

see Pubmed

## **Links**

- Translational Cancer Research Group
- MILES Consortium (BMBF)
- Center for Integrated Oncology (CIO) Köln Bonn